

KINGGates



**Jet**

**AUTOMATION FOR SWING GATES  
WITH LEAVES UP TO 3M - 500 KG**



# Jet

## Automation for swing gates with leaves up to 3 m - 600 kg

### DESIGN AND TECHNOLOGY

Designed to enhance any sort of gate, it fits into any setting. The elegant, wrap-around line of the two die cast aluminium shells makes Jet an original example of Italian-made creativity.

**Thanks to the extractable connector, installation and maintenance are quick and easy.**

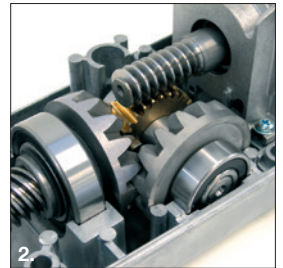
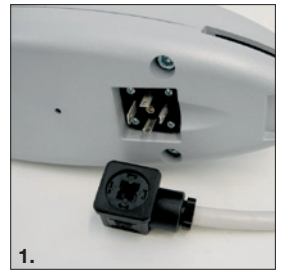
In the AC version, the capacitor is built into the reduction gear and the regulating limit switches allow quick adjustment of travel. **The heart of Jet is the mechanical transmission, designed without cutting any corners to ensure the utmost reliability and to allow a range of use that's wider than the standard.**

All of the components turn on ball bearings which eliminate friction and noise. The use of rolled steel and bronze ensure duration and reliability even in severe conditions. The manual-release handle is made of die cast aluminium with personalized key and ABS lock cover. It is located on the upperpart of the reduction gear to allow immediate, practical use with minimum effort.

### SMART TRADITIONAL ELECTRONICS

STARG8 control units radically simplify the installer's job, guaranteeing high levels of performance in terms of safety, time and speed of installation.

A single programming method speeds up the activation of the automatic devices and managing maintenance operations becomes simple and practical.



#### 1. EXTRACTABLE CONNECTOR

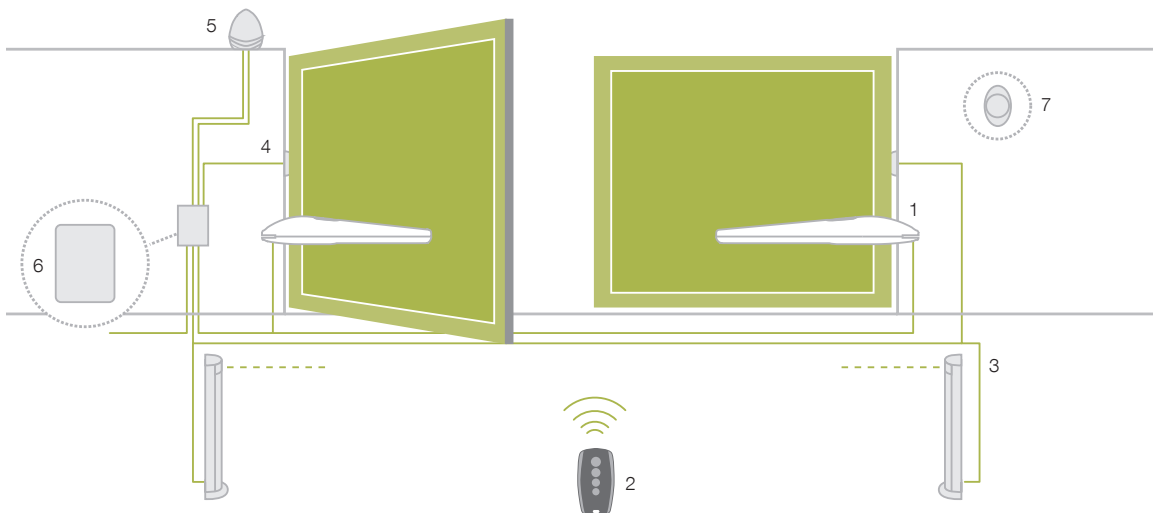
It simplifies installation and maintenance operations

#### 2. STRONG MECHANICAL TRANSMISSION

Made of steel and bronze, for the utmost duration and reliability

#### 3. MANUAL-RELEASE HANDLE

Is made of die cast aluminium with personalized key



#### BASIC INSTALLATION

1. Operator Jet
2. Transmitter
3. Photocells mounted on posts
4. Photocells
5. Flashing light
6. Control unit
7. Key or digital switch

READY FOR





**TECHNICAL DATA**

Model		JET230F	JET24
Code		22S014	23S023
Motor supply	(Vac 50 Hz / Vdc)	230 Vac	24 Vdc
Maximum power draw	(W)	200	120
Speed	(m/s)	0,016	0,020
Force max	(N)	2000	
Working cycle	(%)	30	90
Travel (without limit switches)	(mm)	360	
Protection level	(IP)	44	
Operating temperature	(°C)	-20 ÷ +55	
Automation weight	(kg)	8	7
Operator dimensions	(mm)	820x100x110 h	

24 V version also available for markets with 110 V / 60 Hz mains power supply

## JET

Model	Motor	Mechanical stop	Fixing kit	Wing max dimensions
JET230F	230 Vac	• (1)	•	3 m - 600 kg
JET24	24 Vdc	• (1)	•	3 m - 600 kg

## JET KIT

Model	Code	JET 230	JET 24	STARG8 AC BOX	STARG8 24 BOX	STYLO 4K	IDEA	VIKY 30	TAB	Wing max dimensions
JETKIT230	29S038	• (2)		•		• (2)	•	•	•	3 m - 600 kg
JETKIT230VL	29S063	• (2)		•		• (2)				3 m - 600 kg
JETKIT24	29S045		• (2)		•	• (2)	•	•	•	3 m - 600 kg
JETKIT24VL	29S054		• (2)		•	• (2)				3 m - 600 kg

24 V version also available for markets with 110 V / 60 Hz mains power supply



JET



STARG8 BOX



STYLO 4K



IDEA



VIKY 30



TAB

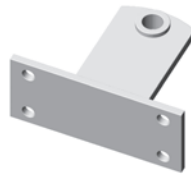




**STP - COD.162299**  
Rear pre-welded bracket  
(2 pcs./package)



**STP 02 - COD.162256**  
Rear pre-welded vertical  
bracket (2 pcs./package)



**STA - COD.162257**  
Front pre-welded bracket  
(2 pcs./package)



**STL - COD.162298**  
Rear bracket,  
length = 220 mm  
(2 pcs./package)



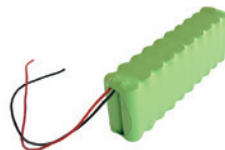
**BK 01 - COD.162258**  
Mechanical limit switch  
(2 pcs./package)



**LOCK HO - COD.162913**  
Horizontal  
electro lock 12 V



**LOCK VE - COD.162912**  
Vertical  
electro lock 12 V



**BAT M016 - COD.161237**  
24 V 1.6 Ah battery



**BAT K3 - COD.161232**  
Battery charge card  
for BAT M016

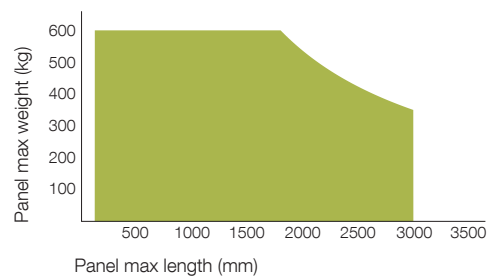
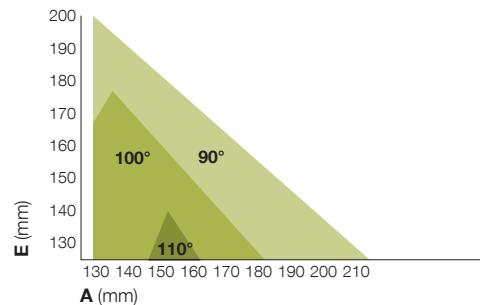
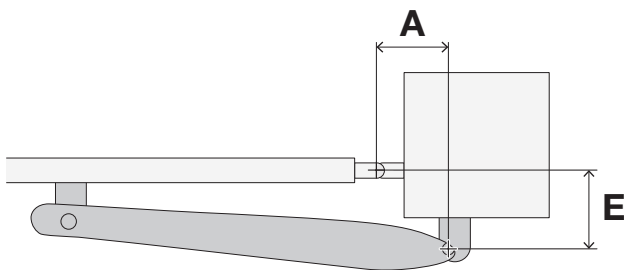


**STP 200 - COD.162259**  
Screw-adjustable  
rear bracket (2 pcs./package)



**STA 200 - COD.162260**  
Screw-adjustable  
front bracket (2 pcs./package)

LIMITS OF USE FOR THE PRODUCT





## **APP FOR THE INSTALLER**

The Kingspecialist App allows you to complete all the programming phases of the installation, directly on the smartphone and tablet.



# **KING**SPECIALIST

### **BASIC PROGRAMMING**

Automatic learning procedure, custom setting of the slowdown points, speed and direction of the motor. Realtime feedback of trimmers values (motor power, obstacle sensitivity, delay, pause), Dip-switches and connections instructions.

### **ADVANCED SETTINGS**

Advanced programming. Setting of AUX, HAZ and GSI outputs. Management of inputs for photocells. Setting of wired inputs. Speed and slowdown points custom configuration. Power saving mode (Standby). Backjump adjustment. Factory settings reset.

### **MEMORIZING REMOTE RADIO CONTROLS**

Quick and easy procedure for memorizing remote radio controls near control panel, without having to access it. Copy of transmitters functions. Management of MEMO 2000 module (remote controls backup and restore on replacement control board).





**KING**Gates

**Brand of V2 S.p.A.**

Corso Principi di Piemonte 65/67  
12035 RACCONIGI CN (ITALY)